

WARNING AWP 30S PLATFORM LIFT “MEWP”

Any piece of equipment can be dangerous if not operated properly. **YOU** are responsible for the safe operation of this equipment. The operator must carefully read and follow any warnings, safety signs and instructions provided with or located on the equipment. Do not remove, defeat, deface or render inoperable any of the safety devices or warnings on this equipment. If any safety devices or warnings have been removed, defeated, defaced or rendered inoperable, **DO NOT USE THIS EQUIPMENT!!! This Page Contains Basic Guidelines & Safety Warnings For This Lift. But It Is Not A Substitute For The Operators Manual. READ THE OPERATORS MANUAL!**

Due to job site or employer rules. Each occupant of the platform may be required to wear personal fall protection equipment. (A Safety Harness with Lanyard attached to the Lanyard Anchorage)

TIP OVER HAZARD, this lift is for use on level compacted surfaces only!

Warning: Misuse, operating when not level and overloading the platform will cause this Lift to tip over. The Equipment Protection Plan does not cover damage from tip over

OPERATING INSTRUCTIONS

The *Operator’s Manual* is located in the red plastic box in the operator’s platform.

Before you operate this lift, read, understand and obey all the safety rules and operating instructions in the Operator’s Manual

Always perform a pre-operation inspection and function test prior to use for every shift, as outlined in the Operator’s Manual.

IMPORTANT SAFETY RULES TO FOLLOW

1. Do not raise platform unless base is level, all four outriggers are properly installed with leveling jacks firmly contacting the floor.
2. Do not adjust or remove outriggers while platform is occupied or raised.
3. Do not move machine while the platform is raised.
4. Do not place or attach overhanging loads to any part of this machine.
5. Do not place or attach ladders in platform or against any part of this lift.
6. Do not use this machine to lift material or equipment.
7. Do not raise platform in strong or gusty winds.
8. Maximum platform capacity is 350lbs. Maximum allowable side force ANSI / CSA 50lbs / 222 N. Maximum occupancy is one person.
9. Do not sit, stand, or climb on platform guardrails. **Both feet must always be on the platform!**
10. Do not exit platform while raised.
11. This machine is **not** electrically insulated and **will not** provide protection from contact with electrical current.
12. Maintain a safe distance from any power lines.
13. Keep all personnel away from machine when operating, raising, or lowering.
14. Do not leave machine unattended at any time.
15. Batteries contain acid. Always wear protective clothing and eyewear when working with batteries.
16. Do not expose battery or machine to water and/or rain.
17. **Battery Needs To Be Charged Daily. Check Battery Water Before Charging**
18. Battery must remain in an upright position at all times.

Warning metal conducts electricity. Do Not use this lift where it may come into contact with power lines or other electric circuits. Failure to comply to this warning will result in serious personal injury or death. For appropriate distances from High Voltage lines see chart below.

Maintain safe distances away from electrical power lines and apparatus in accordance with applicable governmental regulations and the following chart

Voltage Phase to Phase	Minimum Safe Approachable Distance	
	Feet	Meters
0 to 300V	Avoid Contact	
300V to 50KV	10	3.1
50KV to 200KV	15	4.6
200KV to 350KV	20	6.1
350KV to 500KV	25	7.6
500KV to 750KV	35	10.7
750KV to 1000KV	45	13.7

Allow for mast movement and electrical line sway or sag, and be aware of strong or gusty winds. Do not use the machine as a ground for welding.

⚠ WARNING: This product can expose you to sulfuric acid from batteries which are known to the State of California to cause cancer and birth defects or other reproductive harm. For more information go to www.P65warnings.ca.gov

If the person receiving this handout will not be the user of the equipment, forward these instructions to the operator. If there is any doubt as to the operation or safety of the equipment, **DO NOT USE!!! CALL A TOOL SHED IMMEDIATELY!!! FAILURE TO FOLLOW THESE INSTRUCTIONS COULD RESULT IN INJURY OR DEATH**

Chapter 9 – Operation

The aerial platform may be operated from either the lower or upper controls.

▲ Danger

The aerial platform is not electrically insulated. Death or serious injury will result from contact with, or inadequate clearance from, an energized conductor. Do not go closer than the minimum safe approach distance as defined by ANSI.

Pinch points may exist between moving components. Death or serious injury will result from becoming trapped between components, buildings, structures, or other obstacles. Make sure there is sufficient clearance around the machine before moving the chassis or platform. Allow sufficient room and time to stop movement to avoid contact with structures or other hazards.

The aerial platform can tip over if it becomes unstable. Death or serious injury will result from a tip-over accident. Operate the aerial platform on a firm, flat, level surface. Avoid travel speeds and/or rough terrain that could cause sudden changes in platform position. Do not drive or position the aerial platform for elevated use near any drop-off, hole, slope, soft or uneven ground, or other tip-over hazard. Do not raise the platform in wind speeds above 0 mph (0 m/s).

The platform rated work load is the total weight of the personnel and equipment that may be lifted in the platform.

The work loads are stated on the platform rating placard at the entrance to the platform.

▲ Danger

The aerial platform can tip over if it becomes unstable. Death or serious injury will result from a tip-over accident. Do not exceed the capacity values indicated on the platform rating placard.

Capacity values indicate the rated lifting capacity and do not indicate aerial platform stability.

The operator bears ultimate responsibility for ensuring that the aerial platform is properly set up for the particular conditions encountered.

Preparing for Operation

Use the following procedure to prepare the aerial platform for operation:

1. Perform a prestart inspection (refer to Chapter 8).
2. Connect the battery disconnect plug.

Lower Controls

The lower controls may be used for initial set up of the aerial platform and for testing and inspection. The lower controls can also be used to raise and lower the platform.

Use the following procedure to raise or lower the platform using the lower controls.

1. Twist and pull the emergency stop button outward (refer to Figure 9.1 and 9.2).

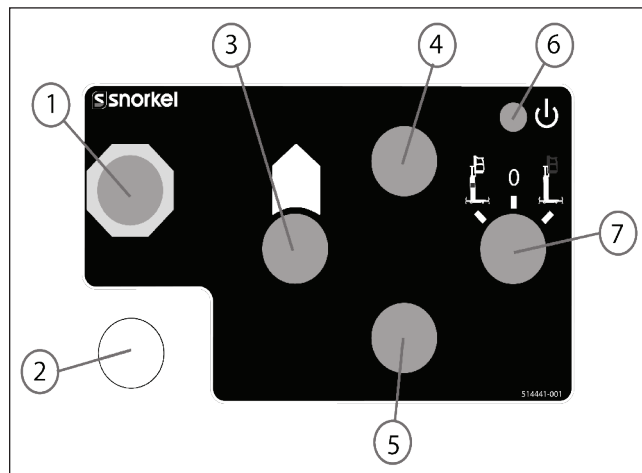


Figure 9.1 – Lower Control Station DC Models

1	Emergency Stop Button	5	Platform Lower Button
2	Diagnostics Port	6	Power Indicator
3	Enable Button	7	Control Selector Switch
4	Platform Raise Button		

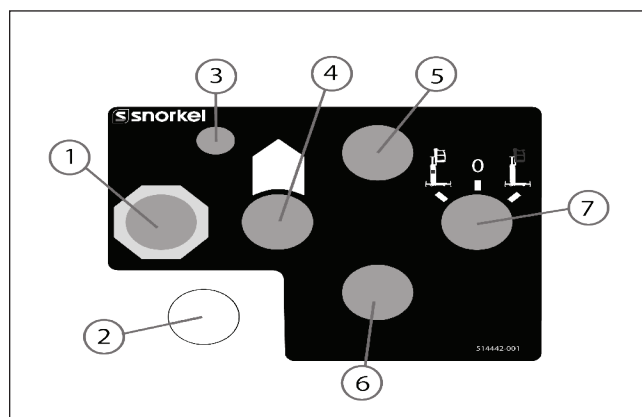


Figure 9.2 – Lower Control Station AC Models

1	Emergency Stop Button	5	Platform Raise Button
2	Diagnostics Port	6	Platform Lower Button
3	Circuit Breaker (MCB)	7	Control Selector Switch
4	Enable Button		

2. Hold down on the platform enable button.
3. Still holding the platform enable button down, use the platform raise or lower button to raise or lower the platform.
4. Release either button to stop movement.

Upper Controls

The upper controls can be used to raise or lower the aerial platform while on the job.

Before operating the upper controls, properly set up the aerial platform as described under Preparing for Operation.

Use the following procedure to operate the aerial platform from the upper controls:

1. From the lower controls, twist and pull the emergency stop button outward (refer to Figure 9.1 and 9.2).
2. Switch the control select/ground operation switch to the upper controls position.

Note

The upper controls will not operate while the control selector is in the lower position.

3. Enter the platform and secure the drop bar.
4. From the upper controls, twist and pull the emergency stop button outward (refer to Figure 9.2).

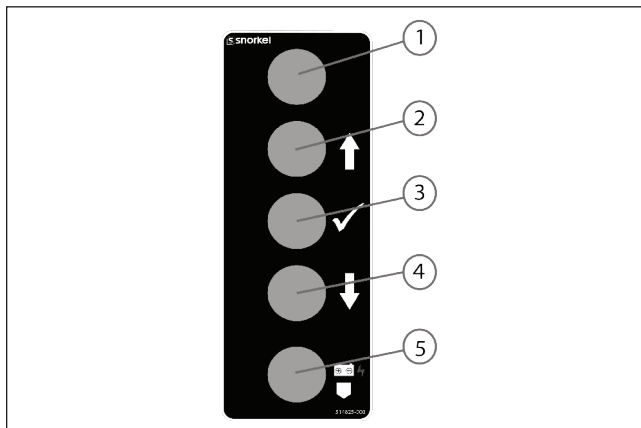


Figure 9.3 – Upper Controls AC Model

1	Emergency Stop Button	4	Platform Lower Button
2	Platform Raise Button	5	Emergency Lower Switch
3	Enable Button		

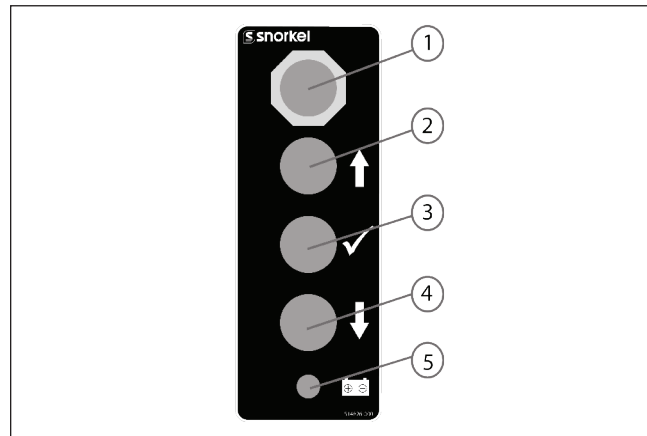


Figure 9.4 – Upper Controls DC Models

1	Emergency Stop Button	4	Platform Lower Button
2	Platform Raise Button	5	Battery Condition Indicator
3	Enable Button		

6. Hold down on the enable button.
7. Still holding the enable button down, use the platform raise or lower button to raise or lower the platform.
8. Release either button to stop movement.

Platform

Use care when entering and exiting the platform to avoid slipping and/or falling. Securely close the drop bar when the platform is occupied.

Battery Box

A battery is enclosed in the battery box at the rear of the aerial platform for DC models (refer to Figure 9.5).

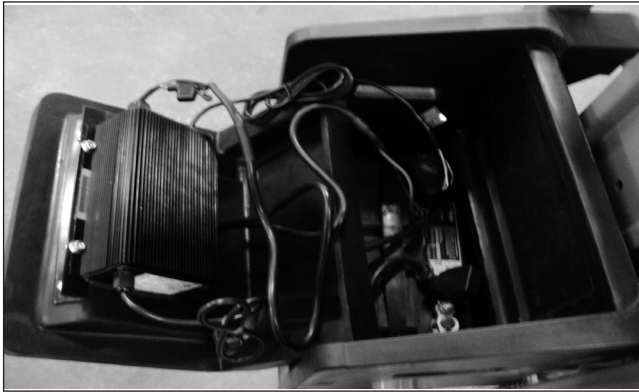


Figure 9.5 – Battery Box

⚠ Danger

The aerial platform can tip over if it becomes unstable. Death or serious injury can result from a tip-over accident. Do not open the battery box when the platform is raised more than eight feet.

- To open the battery box, open the cover (refer to Figure 9.5).
- When closing the battery box, reverse the process to lock it in place.

Electrical Power Outlet

The electrical power outlet has two, 3-prong, 125 volt AC electrical connectors (refer to Figure 9.6).



Figure 9.6 – Electrical Power Outlet

Power is supplied to the outlet by connecting an external power source to the power-input connector on the chassis.

To use the outlet, plug a source of power into the power-input connector. Unplug the source of power before moving the aerial platform.

Emergency Lowering Valve

⚠ Warning

If the platform should fail to lower, never climb down the elevating assembly. Stand clear of the elevating assembly while operating the emergency lowering valve knob.

The emergency lowering valve can be reached only from the ground. The valve is located at the rear of the machine as shown in Figure 9.6.

1. Pull the knob to open the valve.
2. To close the valve, release the knob.

Note

The platform will not elevate if the emergency lowering valve is open.

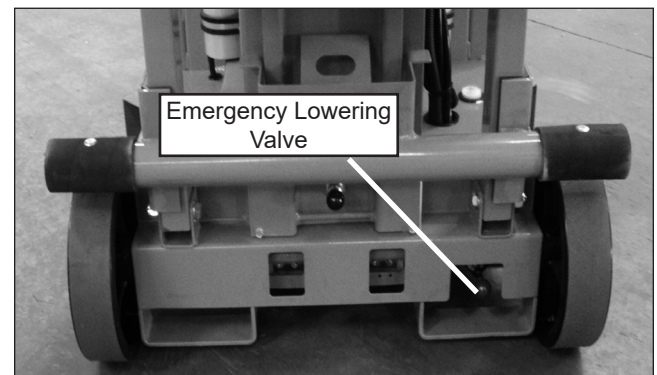


Figure 9.7- Emergency Lowering Valve

To be filled out by the Yard Person doing the customer hook up or Delivery Driver delivering the lift. Upon completion attach it to the original contract.

PRE-RENTAL SAFETY CHECK LIST

ATS # _____ DATE _____ CONTRACT# _____

A-1 OPERATOR'S & SAFETY MANUALS _____

A-2 DECALS & PLACARDS _____

A-3 DAMAGED, LOOSE or MISSING PARTS _____

A-4 DEXRON HYDRAULIC OIL LEVEL & LEAKS _____

A-5 MANUAL LOWERING OPERATION _____

A-6 BATTERY & CHARGER _____

A-7 COLUMNS _____

A-8 SEQUENCING CABLES _____

A-9 CHECK INTERLOCK SYSTEM ON OUTRIGGERS _____

A-10 TEST THE POWER & FUNCTION CONTROLS _____

A-11 INSPECT THE LIFTING CHAINS & IDLER WHEELS _____

INSPECTED BY (print) _____

INSPECTED BY (signature) _____

To be filled out by the Yard Person doing the customer hook up or Delivery Driver delivering the lift. Upon completion attach it to the original contract.

CONTRACT # _____ EMPLOYEE NAME: _____

QUALIFIED OPERATOR ACKNOWLEDGMENT

1. Operator was shown the Operator and ANSI Manuals.

OPERATORS INITIALS _____

2. Operator understands that a "Pre-Operation Inspection and Function Test" must be performed before each shift. These procedures are detailed in the Operator's Manual. If any problems or malfunctions are found **Do Not Operate This Lift!** Immediately call A Tool Shed so we can repair or replace the lift.

OPERATORS INITIALS _____

3. Before using this lift the Operator will inspect the jobsite for hazards, including but not limited to: operation surface irregularities, drop offs, holes, debris, obstructions (floor or overhead), high voltage conductors, wind, or adverse weather.

OPERATORS INITIALS _____

4. Operator Acknowledges that they are Qualified to operate this lift.

OPERATORS INITIALS _____

5. Only Qualified persons shall operate the equipment, and shall do so in accordance with the full provisions outlined in the operator's manual provided. Only lessee's trained operators are authorized to operate the equipment. Do not lend, or sub-lease this equipment.

OPERATORS INITIALS _____

Customer Acknowledges the Paint on this Lift is:

EXCELLENT _____ GOOD _____ FAIR _____

COMMENTS _____

OPERATORS SIGNATURE: _____

DATE: _____

PRINTED NAME: _____